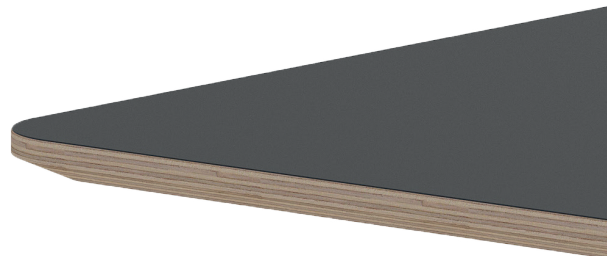


Tabletop finishes - Beso Table

Material: 24 mm plywood.
Top coat: Laminate Arpa Fenix.
Finishing edge: Plywood, chamfered milled with a transparent oil finish (O02 Pure).



Material: 24 mm plywood.
Top coat: Oak veneer (F06) with standard oil finish, oak veneer (F06) transparent lacquered (B20) or black stained (B11).
Finishing edge: Plywood, chamfered milled, finished as top coat.



Material: 25 mm solid oak.
Top coat: Transparent lacquered (B20) or black stained (B11) or in a standard oil finish.
Finishing edge: Chamfered milled, finished as top coat.



Material and top coat: 12 mm compact Arpa Fenix.
Finishing edge: Double sided with matching color core.

